
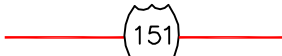




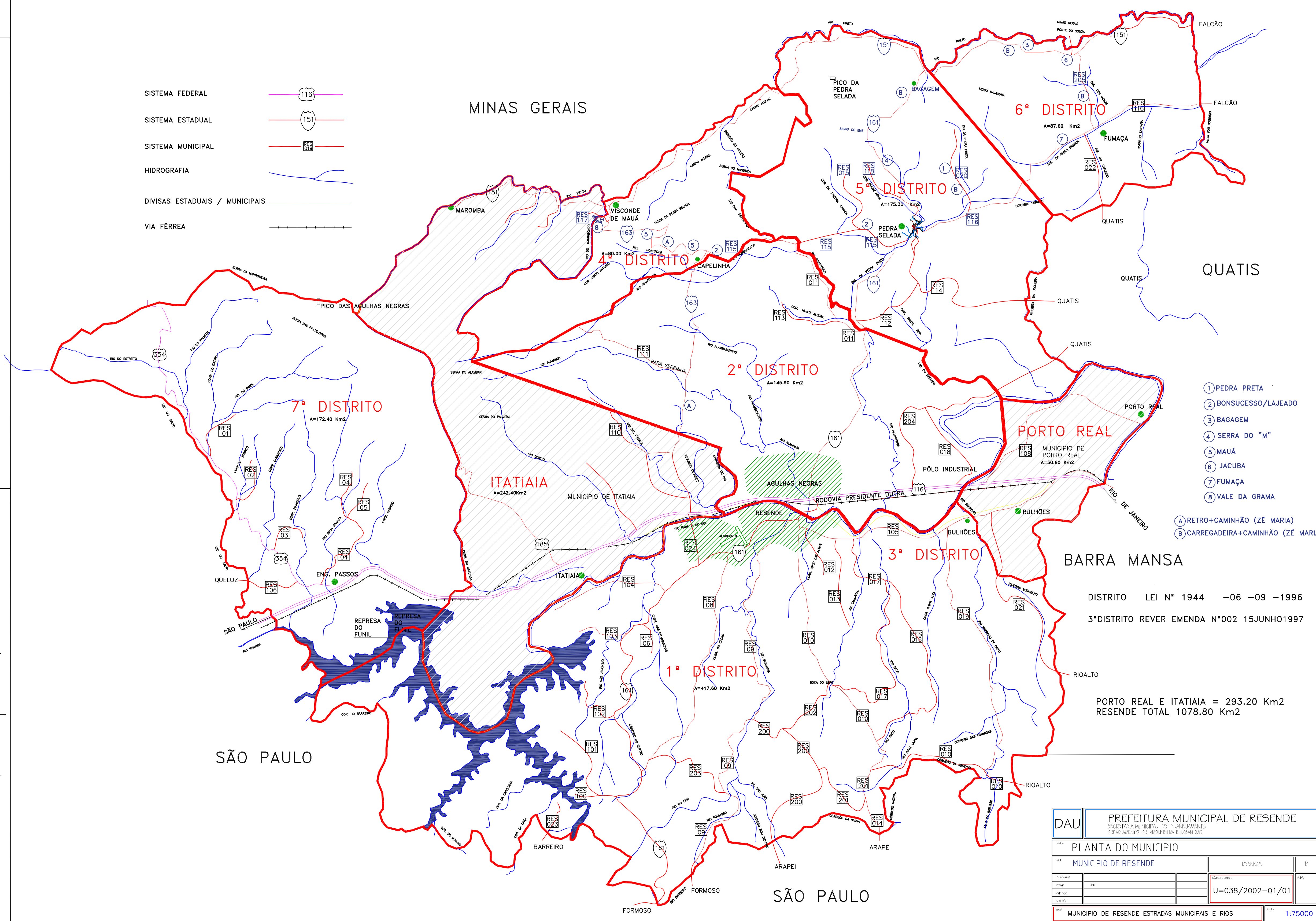


- SISTEMA FEDERAL 
- SISTEMA ESTADUAL 
- SISTEMA MUNICIPAL 
- HIDROGRAFIA 
- DIVISAS ESTADUAIS / MUNICIPAIS 
- VIA FERREA 

MINAS GERAIS



- ① PEDRA PRETA
- ② BONSUCESSO/LAJEADO
- ③ BAGAGEM
- ④ SERRA DO "M"
- ⑤ MAUÁ
- ⑥ JACUBA
- ⑦ FUMAÇA
- ⑧ VALE DA GRAMA
- A RETRO-CAMINHÃO (ZÉ MARIA)
- B CARREGADEIRA-CAMINHÃO (ZÉ MARIA)

DISTRITO LEI N° 1944 -06 -09 -1996
 3º DISTRITO REVER EMENDA N°002 15JUNHO1997

PORTO REAL E ITATIAIA = 293.20 Km²
 RESENDE TOTAL 1078.80 Km²

DAU		PREFEITURA MUNICIPAL DE RESENDE	
SECRETARIA MUNICIPAL DE PLANEJAMENTO		DEPARTAMENTO DE ARQUITETURA E URBANISMO	
PLANTA DO MUNICIPIO			
MUNICIPIO DE RESENDE		RESENDE	RJ
DATA:	ELABORADO:	REVISADO:	APROVADO:
PROJETO:	REVISAO:	REVISAO:	REVISAO:
MUNICIPIO DE RESENDE ESTRADAS MUNICIPAIS E RIOS		U=038/2002-01/01	1:75000